

## **C00872R USB-RS232 Adapter Cable with RJ Connector RJ9/RJ10/RJ11/RJ12/RJ45**

### **Features:**

- USB RS232 signal conversion
- Virtual COM port device driver
- Modular plug connector (RJ9/RJ10/RJ11/RJ12/RJ45)
- Customer defined connector pin assignments
- ESD surge protection:  $\pm 8\text{kv}$  contact discharge,  $\pm 15\text{kv}$  air gap discharge
- USB bus powered, 17.5mA
- Cable length 2 meters



### **Specifications:**

USB	USB specification 2.0 compliant USB full speed 12Mbps transmission USB type A plug connector
RS232	4P4C, 6P6C, or 8P8C modular plug connector Baud rate: 300bps to 115200bps Parity: Even, Odd, None, Mark, Space Data length: 5-bit, 6-bit, 7-bit, 8-bit Stop bits: 1-bit, 2-bit
Power	USB bus powered, 17.5mA
Software	32-bit and 64-bit virtual COM port device driver for Microsoft Windows 8, Windows 7, Windows Vista, Windows XP.

### **Device Driver Installation:**

The software package is supplied in a compressed folder file named *USB\_COM\_1P\_Driver* or a CD. Here are the installation steps.

1. If you have file *USB\_COM\_1P\_Driver*, rename *USB\_COM\_1P\_Driver* to *USB\_COM\_1P\_Driver.zip*, extract all files to a file folder on your local disk or USB drive, double click *setup.exe* to start software installation.
2. If you have the software CD, insert the software CD into your computer's disc drive, the software installation will start automatically.
3. Follow the on-screen instructions until the setup wizard finishes.
4. Plug the adapter's USB cable to the computer's USB port.
5. Follow the on-screen instructions if any to complete the software installation.

### **Assembling and RS232 Signals**

The modular plug connector can be assembled by us if pin assignments are provided. The pins of the 4P4C, 6P6C, 8P8C plug connectors are numbered sequentially 1 to 4, 1 to 6, 1 to 8. Pin 1 is on the left when the connector is viewed with the retention mechanism on the bottom and the cable opening toward the viewer. RS232 signals are,

Conductor Color	RS232 Signal
Green	Rx
Orange	Tx
Brown	GND



# DEVICE FUNCTIONS

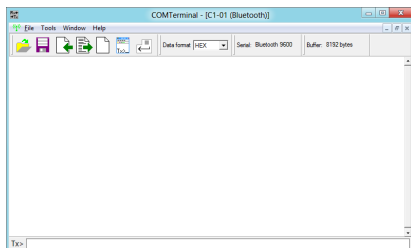
---

## Ordering Information

Part Number	Connector Type	RJ Connector
C00872R44	4P4C	RJ9, RJ10, RJ22
C00872R66	6P6C	RJ11, RJ12, RJ14, RJ25
C00872R88	8P8C	RJ45

## Accessories

**eeTerminal:** Configure, read, and write USB-RS232 cables. Upload/download files.



©2015 Device Functions. All right reserved.