

## C008723 Virtual COM USB-Bluetooth Adapter

### Features

- Bluetooth pairing and unpairing
- USB type A plug interface
- Virtual COM port device driver
- Integrated antenna
- Bluetooth Class 1 Radio
- Data encryption
- Automatic Bluetooth connection
- LED indicator
- Configuration via USB
- Power from USB port



### Specifications

Bluetooth	Bluetooth v2.1 + EDR Class 1 Radio
USB	USB specification 2.0 compliant USB full speed 12Mbps transmission USB type A plug connector
COM	Baud rate: 1200bps to 115200bps Data length: 8-bit
Power	USB bus powered, idle 19mA, normal 45mA, maximum 100mA.
Software	32-bit and 64-bit virtual COM port device driver for Microsoft Windows 8, Windows 7, Windows Vista, Windows XP.

### Typical Applications

#### Virtual COM Port for Bluetooth enabled devices

Install the virtual COM port device driver on your PC. Follow the configuration instruction to pair this USB-Bluetooth adapter with your Bluetooth enabled device, and set USB-Bluetooth adapter's COM port settings.

The USB-Bluetooth adapter will automatically connect with your Bluetooth enabled device. This creates a wireless connection between USB port and your Bluetooth enabled device, and your application software can access this connection through the virtual COM port.

#### USB to RS232 over Bluetooth

Install the virtual COM port device driver on your PC. Follow the configuration instruction to pair this USB-Bluetooth adapter with a Bluetooth-RS232 adapter. Set the same settings for USB-Bluetooth adapter and Bluetooth-RS232 adapter. This creates a wireless connection between USB port and RS232 port, and your application software can access this connection through the virtual COM port.

### System Requirements

Configuring C008723 adapters on a PC requires:

- Microsoft Windows 8, Windows 7, Windows Vista, or Windows XP.
- eeTerminal (download from [www.devicefunctions.com](http://www.devicefunctions.com)).

### Device Driver Installation:

The software package is supplied in a compressed folder file named *USB\_COM\_1P\_Driver* or a CD. Here are the installation steps.

1. If you have file *USB\_COM\_1P\_Driver*, rename *USB\_COM\_1P\_Driver* to *USB\_COM\_1P\_Driver.zip*, extract all files to a file folder on your local disk or USB drive, double click *setup.exe* to start software installation.
2. If you have the software CD, insert the software CD into your computer's disc drive, the software installation will start automatically.
3. Follow the on-screen instructions until the setup wizard finishes.

# DEVICE FUNCTIONS

4. Plug USB-Bluetooth adapter to the computer's USB port.
5. Follow the on-screen instructions if any to complete the software installation.

## LED Indicator

### Status

Connected  
Waiting for Connection  
Configuring

### LED Flash Rate

Solid ON  
Once per second  
10 times per second

## Power Up

First, power on the Bluetooth device that is paired with C008723, then power on C008723 adapter. The Bluetooth LED will be solid on in a while. If Bluetooth LED keeps flashing, the two devices need to be paired.

## Configuration

Turn off the paired Bluetooth device if this USB-Bluetooth adapter is paired.

Step 1 Start configuration

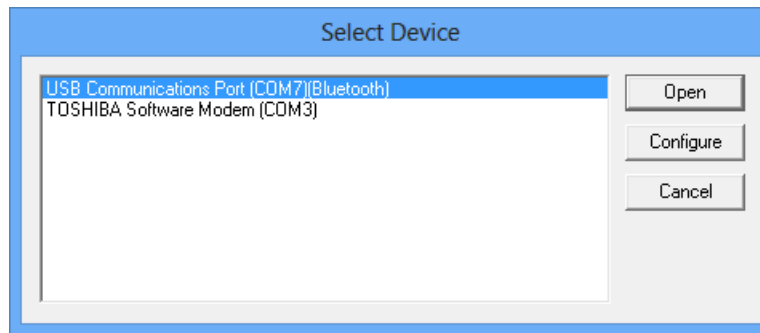


Fig 1

Plug USB-Bluetooth adapter in a PC's USB port. Start eeTerminal. Click *File* from eeTerminal's menu bar and click *Open Device*. A *Select Device* window, Fig 1, will popup with a list of devices.

Select the COM port assigned to USB-Bluetooth adapter. This COM port has "Bluetooth" in its name. Click *Configure* button. The *Bluetooth Settings* window, Fig 2, will popup in a few seconds.

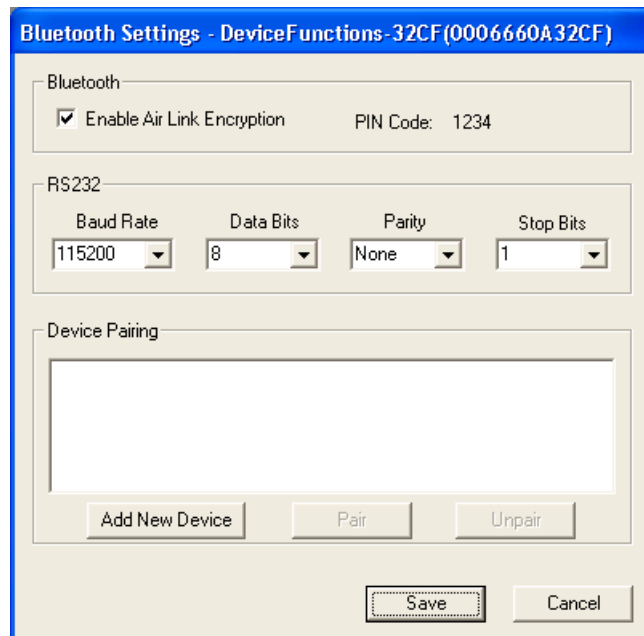


Fig 2

# DEVICE FUNCTIONS

## Step 2 Configure Bluetooth adapter

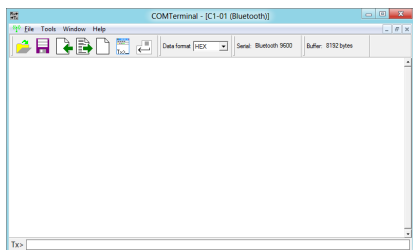
- Encryption support is always enabled. The paired device must also support link encryption in order to set an encrypted connection.
- Authentication pin code is 1234. Authentication is turned off by default.
- RS232 settings. Set virtual COM port's baud rate, parity, and stop bits.
- Device Pairing. In order to make a Bluetooth connection, two Bluetooth devices must be paired. Click *Add New Device* button. Visible Bluetooth devices in range will be listed in a few seconds. You may need to click *Add New Device* multiple times to find Bluetooth devices. Select a Bluetooth device and click *Pair* button.
- Device Unpairing. Click *Unpair* button if enabled to erase pairing information.

## Step 3 Save Bluetooth adapter's settings

Click *Save* button to save new settings or click *Cancel* button to cancel any modification. The new settings will take effect immediately once saved.

## Accessories

**eeTerminal:** Configure, read, and write USB-Bluetooth adapter. Upload/download files.



## Environmental Conditions

Operating temperature range	0 °C TO +55 °C
Storage temperature range	-20 °C TO +70 °C
Relative humidity	0% to 90%, non-condensing

©2014 Device Functions. All right reserved.