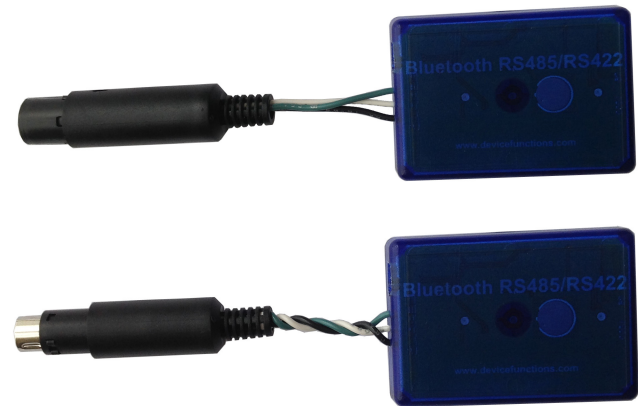


AN0485B Bluetooth RS485/RS422 Adapters with Mini DIN Connector - Mini-DIN3/4/5/6/7/8

Features

- RS485/RS422 interface with mini-DIN connector
- Half-duplex data communication
- ESD, EFT, and surge protection
- Customer defined connector pin assignments
- Bluetooth Class 1 Radio
- Integrated antenna
- Data encryption
- Support Microsoft Windows Bluetooth COM port
- Battery powered
- LED indicators
- Configuration via USB
- Touch button power switch
- Battery usage meter
- Battery overdischarge protection (manually activate)




Specifications


Bluetooth	Bluetooth v2.1 + EDR Class 1 Radio
RS485/RS422	Half-duplex transceiver 1/8-unit-load receiver input impedance or up to 256 transceivers on one bus True fail-safe receiver No integral 120Ohm termination resistor Mini-DIN connector, plug or receptacle Baud rate: 300bps to 115200bps Parity: Even, Odd, None, Mark, Space Data length: 5-bit, 6-bit, 7-bit, 8-bit Stop bits: 1-bit, 2-bit
USB	USB 2.0, USB Micro-B receptacle connector
Software	Microsoft Windows 8, Windows 7, Windows Vista, eeTerminal.
Power	3.6v AA size battery

Typical Application - Microsoft Windows Bluetooth COM Port

This application requires install this Bluetooth adapter on Microsoft Windows, and Bluetooth connection to computer is required. A virtual COM port is created for this adapter after installation. User application software can access this adapter's RS485/RS422 interface using this virtual COM port. Here are the steps to install this adapter on Microsoft Windows. The adapter's authentication pin code is 1234.

Method 1 - Install Bluetooth Adapter Using eeTerminal Power on Bluetooth adapter. Starts eeTerminal. Select **File** from menu bar, and select **Open Device**. The software lists all compatible devices in a pop-up window. Select the Bluetooth device from the list and click the **Open** button. Follow the on-screen instructions to install the device if this Windows version supports automatic device installation.

Method 2 - Install Bluetooth Adapter Using Windows Bluetooth Device Manager Power on Bluetooth adapter. Locate Bluetooth icon  on Microsoft Windows taskbar. Click on it and select *Add a Bluetooth Device*. Follow Microsoft Windows on-screen instructions to install the device.

After Windows successfully installs the Bluetooth adapter, a virtual COM port (Outgoing direction) with SPP description will be created. To check the COM port number, click  on Windows taskbar and select *Open (Bluetooth) Settings*. Click *COM Ports* in *Bluetooth Settings* window.

LED Indicator - Bluetooth connection

Status	LED Flash Rate
Connected	Solid on
Waiting for connection	Once per second

DEVICE FUNCTIONS

LED Indicator - Battery meter and battery switch

Status

Battery switch (touch button)
 Battery good
 Battery low (Non-rechargeable)
 Battery extremely low (Non-rechargeable)
 Battery low (Rechargeable)
 Battery cutoff (Rechargeable)

LED Flash Rate

Solid on while touching, otherwise off
 LED off
 Once every 3 or 2 seconds
 Once per second
 Once per second
 LED off

Assembling and RS485/RS422 Signals

The mini DIN connector can be assembled by us if pin assignments are provided. An integral 120 Ohm termination resistor can be installed if requested. RS485/RS422 signals are,

Conductor Color	RS485/RS422 Signal
Green	TxD+/RxD+ (A)
Orange	TxD-/RxD- (B)
Black	GND (C)

Ordering Information

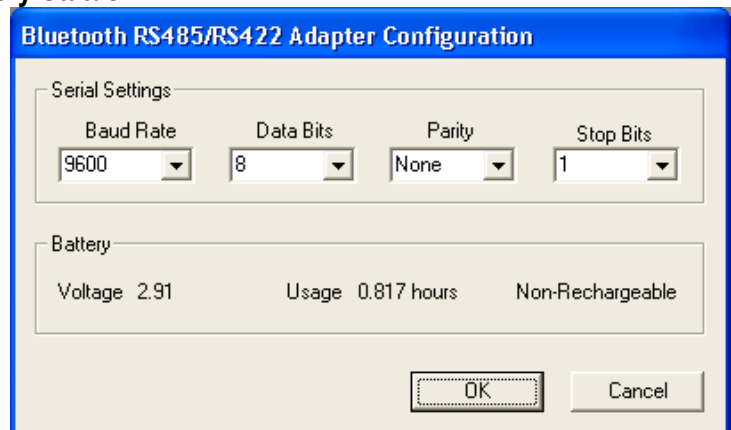
Part Number	Connector Type	Number of Pins
AN0485B3P	Plug, Male Pins	3
AN0485B3R	Receptacle, Female Sockets	3
AN0485B4P	Plug, Male Pins	4
AN0485B4R	Receptacle, Female Sockets	4
AN0485B5P	Plug, Male Pins	5
AN0485B5R	Receptacle, Female Sockets	5
AN0485B6P	Plug, Male Pins	6
AN0485B6R	Receptacle, Female Sockets	6
AN0485B7P	Plug, Male Pins	7
AN0485B7R	Receptacle, Female Sockets	7
AN0485B8P	Plug, Male Pins	8
AN0485B8R	Receptacle, Female Sockets	8

RS485/RS422 Serial Configuration and Check Battery Status

The adapter's serial settings are configured using eeTerminal (download from www.devicefunctions.com). Connect the adapter's USB port to a computer's USB port. Start eeTerminal, click **File** from menu bar, and select **Open Device**. eeTerminal lists all compatible devices in a pop-up window. Select **DEVICE FUNCTIONS UART/RS485** and click the **Configure** button. A device configuration window will pop up. Select the required serial settings and click **OK** to save the new settings, or click **Cancel** to cancel the configuration.


In the battery section, it shows the battery status: battery voltage, number of hours that the battery has been used, and battery type (non-rechargeable or rechargeable).

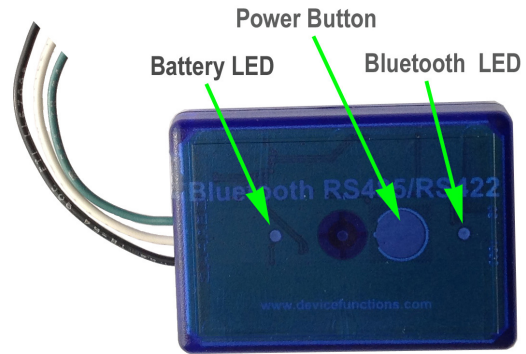
The battery status is not updated automatically on PC. To check the battery status from PC, first turn off the battery if it is on, turn on the battery power. Follow the instruction above to read the battery status.




DEVICE FUNCTIONS

Battery Power On and Power Off

Touch on power button  until battery LED lights up. Left your finger. Touch twice more consecutively. The battery LED must be on with each touch. This turns on battery power. The same procedure is used to turn off battery power.



Battery Usage Meter


The battery usage meter tells the number of hours that the battery has been used. Power on the adapter. Place your finger on  power button. The battery LED will start flashing in a few seconds. Count the number of flashing until the battery LED stops flashing. Lift your finger. The battery usage is read as,

Number of Flashing	Battery Usage (hours)
10	90 - 100
9	80 - 90
8	70 - 80
7	60 - 70
6	50 - 60
5	40 - 50
4	30 - 40
3	20 - 30
2	10 - 20
1	Less than 10

Change Battery





This adapter requires a 3.6v AA size battery. Both non-rechargeable and rechargeable batteries can be used. Unscrew the screw on the battery pack. Remove the cover gently. Remove the old battery and place the new battery in. Align the + and - signs on the battery with the + and - signs on the battery holder. Put on the cover and tighten the screw.




Rechargeable Battery Overdischarge Protection

This feature can be activated when changing battery. It prevents rechargeable battery degradation caused by overdischarge. To activate overdischarge protection, touch on  power button while placing in the rechargeable battery. The LED must be solid on. Left your finger. Touch twice more consecutively. The LED will flash three times. This indicates that the over discharge protection is activated.

Overdischarge protection is off by default. You need to activate this feature every time when you change rechargeable battery.

Touch Button Adjustment

Unscrew the screw and gently remove the cover. Remove the battery. Touch on  power button while placing back the battery. The LED is solid on. Keep touching on  power button until LED off. Lift your finger. Wait until the LED is solid on again. Place your finger over  power button. Keep your finger on  power button until LED starts flashing. Lift your finger. When the LED stops flashing, the touch button recalibration is done.

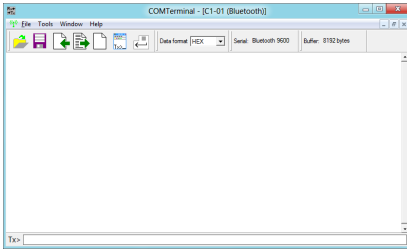
The following procedure can be used to restore manufacture's touch button setting. Unscrew the screw and gently remove the cover. Remove the battery. Touch on  power button while placing back the battery. The LED is solid on. Keep your finger on  power button until LED off. Continue keeping your finger on  power button until LED starts flashing. Lift your finger. When the LED stops flashing, the touch button is restored.

DEVICE FUNCTIONS

Accessories

eeTerminal

Configure, read, and write Bluetooth adapters. Upload/download files.



Environmental Conditions

Operating temperature range	0°C TO +45°C
Storage temperature range	-20°C TO +35°C
Relative humidity	0% to 90%, non-condensing

©2015 Device Functions. All right reserved.