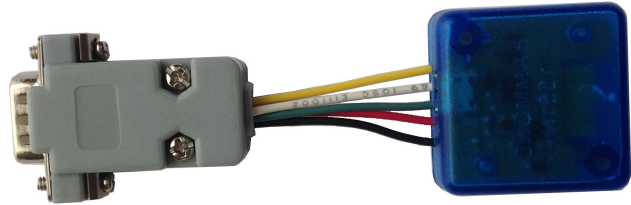


## AD0485E Bluetooth RS485/RS422 Adapters with D-sub Connector DB9/DB15/DB25

### Features

- RS485/RS422 interface with DB9/DB15/DB25 connector
- Half-duplex data communication
- ESD, EFT, and surge protection
- Customer defined connector pin assignments
- Bluetooth Class 1 Radio
- Integrated antenna
- Data encryption
- Support Microsoft Windows Bluetooth COM port
- LED indicator
- Configuration via USB




### Specifications


|             |  |
|-------------|--|
| Bluetooth   | Bluetooth v2.1 + EDR<br>Class 1 Radio  |
| RS485/RS422 | Half-duplex transceiver<br>1/8-unit-load receiver input impedance or up to 256 transceivers on one bus<br>True fail-safe receiver<br>No integral 120Ohm termination resistor<br>DB9, DB15, or DB25 connector, male or female<br>Baud rate: 300bps to 115200bps<br>Parity: Even, Odd, None, Mark, Space<br>Data length: 5-bit, 6-bit, 7-bit, 8-bit<br>Stop bits: 1-bit, 2-bit |
| USB         | USB 2.0, USB Micro-B receptacle connector  |
| Software    | Microsoft Windows 8, Windows 7, Windows Vista, eeTerminal.   |
| Power       | +5v DC power supply  |

### Typical Application - Microsoft Windows Bluetooth COM Port

This application requires install this Bluetooth adapter on Microsoft Windows, and Bluetooth connection to computer is required. A virtual COM port is created for this adapter after installation. User application software can access this adapter's RS485/RS422 interface using the virtual COM port. Here are the steps to install this adapter on Microsoft Windows. The adapter's authentication pin code is 1234.

**Method 1 - Install Bluetooth Adapter Using eeTerminal** Power on Bluetooth adapter. Starts eeTerminal. Select **File** from menu bar, and select **Open Device**. The software lists all compatible devices in a pop-up window. Select the Bluetooth device from the list and click the **Open** button. Follow the on-screen instructions to install the device if this Windows version supports automatic device installation.

**Method 2 - Install Bluetooth Adapter Using Windows Bluetooth Device Manager** Power on Bluetooth adapter. Locate Bluetooth icon  on Microsoft Windows taskbar. Click on it and select *Add a Bluetooth Device*. Follow Microsoft Windows on-screen instructions to install the device.

After Windows successfully installs the Bluetooth adapter, a virtual COM port (Outgoing direction) with SPP description will be created. To check the COM port number, click  on Windows taskbar and select *Open (Bluetooth) Settings*. Click *COM Ports* in *Bluetooth Settings* window.

### LED Indicator - Bluetooth connection

| Status                 | LED Flash Rate  |
|------------------------|-----------------|
| Connected              | Solid on        |
| Waiting for connection | Once per second |

# DEVICE FUNCTIONS

## Assembling and RS485/RS422 Signals

The D-sub connector can be assembled by us if pin assignments are provided. An integral 120 Ohm termination resistor can be installed if requested. RS485/RS422 signals are,

| Wire Pin Terminal Color | RS485/RS422 Signal |
|-------------------------|--------------------|
| Green                   | TxD+/RxD+ (A)      |
| White                   | TxD-/RxD- (B)      |
| Yellow                  | Signal GND (C)     |
| Red                     | +5v Power Input    |
| Black                   | Power GND Input    |

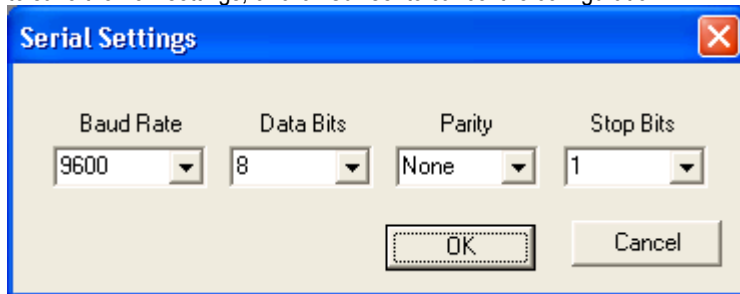
NOTE: use separate ground for signal and power when RS485/RS422 signal is transmitted over a long distance.

## Ordering Information

| Part Number | Connector Type |
|-------------|----------------|
| AD0485E9F   | DB9 female     |
| AD0485E9M   | DB9 male       |
| AD0485E15F  | DB15 female    |
| AD0485E15M  | DB15 male      |
| AD0485E25F  | DB25 female    |
| AD0485E25M  | DB25 male      |

## RS485/RS422 Serial Configuration

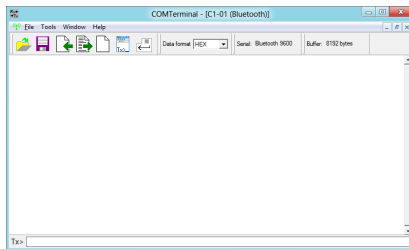
The adapter's serial settings are configured using eeTerminal (download from [www.devicefunctions.com](http://www.devicefunctions.com)). If the adapter is powered from RS485/RS422 port, disconnect the adapter. Connect the adapter's USB port to a computer's USB port. Start eeTerminal, click **File** from menu bar, and select **Open Device**. eeTerminal lists all compatible devices in a pop-up window. Select **DEVICE FUNCTIONS UART/RS485** and click the **Configure** button. A device configuration window will pop up. Select the required serial settings and click **Ok** to save the new settings, or click **Cancel** to cancel the configuration.



## Accessories

### eeTerminal

Configure, read, and write Bluetooth adapters. Upload/download files.



# DEVICE FUNCTIONS

---

## Environmental Conditions

|                             |                           |
|-----------------------------|---------------------------|
| Operating temperature range | -20°C TO +65°C            |
| Storage temperature range   | -40°C TO +85°C            |
| Relative humidity           | 0% to 90%, non-condensing |

©2015 Device Functions. All right reserved.