

## **A00485P USB-RS485/RS422 Adapter with Wire Pin Terminals**

### **Features:**

- USB RS485/RS422 signal conversion
- Virtual COM port device driver
- Half-duplex data communication
- Wire pin terminals
- Short stub
- ESD, EFT, and surge protection
- USB bus powered, Rx 14mA, Tx 17mA (PTP)
- 2m cable length



### **Specifications:**

USB	USB specification 2.0 compliant USB full speed 12Mbps transmission USB type A plug connector
RS485/RS422	Half-duplex transceiver 1/8-unit-load receiver input impedance or up to 256 transceivers on one bus True fail-safe receiver No integral 120Ohm termination resistor Wire pin terminals Baud rate: 300bps to 115200bps Parity: Even, Odd, None, Mark, Space Data length: 5-bit, 6-bit, 7-bit, 8-bit Stop bits: 1-bit, 2-bit
Power	USB bus powered, receiving 14mA, transmitting 17mA (Point-to-Point)
Software	32-bit and 64-bit virtual COM port device driver for Microsoft Windows 8, Windows 7, Windows Vista, Windows XP.

### **System Requirements**

Configuring RS485/RS422 serial settings on a PC requires:

- Microsoft Windows 8, Windows 7, Windows Vista, or Windows XP
- eeTerminal (download from [www.devicefunctions.com](http://www.devicefunctions.com))

### **Device Driver Installation:**

The software package is supplied in a compressed folder file named *USB\_COM\_1P\_Driver* or a CD. Here are the installation steps.

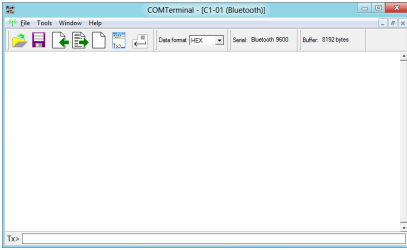
1. If you have file *USB\_COM\_1P\_Driver*, rename *USB\_COM\_1P\_Driver* to *USB\_COM\_1P\_Driver.zip*, extract all files to a file folder on your local disk or USB drive, double click *setup.exe* to start software installation.
2. If you have the software CD, insert the software CD into your computer's disc drive, the software installation will start automatically.
3. Follow the on-screen instructions until the setup wizard finishes.
4. Plug the adapter's USB cable to the computer's USB port.
5. Follow the on-screen instructions if any to complete the software installation.

### **RS485/RS422 Signal Descriptions**

Wire Pin Color	RS485/RS422 Signal
Green	TxD+/RxD+ (A)
White	TxD-/RxD- (B)
Black	GND (C)

## Accessories

**eeTerminal:** Configure, read, and write USB-RS485/RS422 cables. Upload/download files.



©2014 Device Functions. All right reserved.