

A00485N USB-RS485/RS422 Adapter Cable with Mini DIN Connector Mini-DIN3/4/5/6/7/8

Features:

- USB RS485/RS422 signal conversion
- Virtual COM port device driver
- Half-duplex data communication
- Mini-DIN connector, plug or receptacle
- Short stub
- Customer defined connector pin assignments
- ESD, EFT, and surge protection
- USB bus powered, Rx 14mA, Tx 17mA (PTP)
- 2m cable length



Specifications:

USB	USB specification 2.0 compliant USB full speed 12Mbps transmission USB type A plug connector
RS485/RS422	Half-duplex transceiver 1/8-unit-load receiver input impedance or up to 256 transceivers on one bus True fail-safe receiver No integral 120Ohm termination resistor Mini-DIN connector, plug or receptacle Baud rate: 300bps to 115200bps Parity: Even, Odd, None, Mark, Space Data length: 5-bit, 6-bit, 7-bit, 8-bit Stop bits: 1-bit, 2-bit
Power	USB bus powered, receiving 14mA, transmitting 17mA (Point-to-Point)
Software	32-bit and 64-bit virtual COM port device driver for Microsoft Windows 8, Windows 7, Windows Vista, Windows XP.

Assembling and RS485/RS422 Signals

The mini DIN connector can be assembled by us if pin assignments are provided. An integral 120 Ohm termination resistor can be installed if requested. RS485/RS422 signals are,

Conductor Color	RS485/RS422 Signal
Green	TxD+/RxD+ (A)
White	TxD-/RxD- (B)
Black	GND (C)

Ordering Information

Part Number	Connector Type	Number of Pins
A00485N3P	Plug, Male Pins	3
A00485N3R	Receptacle, Female Sockets	3
A00485N4P	Plug, Male Pins	4
A00485N4R	Receptacle, Female Sockets	4
A00485N5P	Plug, Male Pins	5
A00485N5R	Receptacle, Female Sockets	5
A00485N6P	Plug, Male Pins	6
A00485N6R	Receptacle, Female Sockets	6

DEVICE FUNCTIONS

A00485N7P	Plug, Male Pins	7
A00485N7R	Receptacle, Female Sockets	7
A00485N8P	Plug, Male Pins	8
A00485N8R	Receptacle, Female Sockets	8

System Requirements

Configuring RS485/RS422 serial settings on a PC requires:

- Microsoft Windows 8, Windows 7, Windows Vista, or Windows XP
- eeTerminal (download from www.devicefunctions.com)

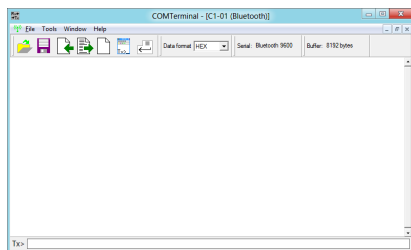
Device Driver Installation:

The software package is supplied in a compressed folder file named *USB_COM_1P_Driver* or a CD. Here are the installation steps.

1. If you have file *USB_COM_1P_Driver*, rename *USB_COM_1P_Driver* to *USB_COM_1P_Driver.zip*, extract all files to a file folder on your local disk or USB drive, double click *setup.exe* to start software installation.
2. If you have the software CD, insert the software CD into your computer's disc drive, the software installation will start automatically.
3. Follow the on-screen instructions until the setup wizard finishes.
4. Plug the adapter's USB cable to the computer's USB port.
5. Follow the on-screen instructions if any to complete the software installation.

Accessories

eeTerminal: Configure, read, and write USB-RS485/RS422 cables. Upload/download files.



©2014 Device Functions. All right reserved.