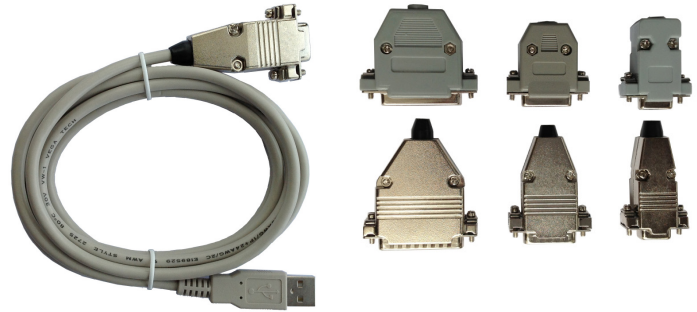


A00485D USB-RS485/RS422 Adapter Cable with D-sub Connector DB9/DB15/DB25

Features:

- USB RS485/RS422 signal conversion
- Virtual COM port device driver
- Half-duplex data communication
- DB9, DB15, or DB25 connector
- Short stub
- Customer defined connector pin assignments
- ESD, EFT, and surge protection
- Unshielded, or shielded
- USB bus powered, Rx 14mA, Tx 17mA (PTP)
- 2m cable length



Specifications:

USB	USB specification 2.0 compliant USB full speed 12Mbps transmission USB type A plug connector
RS485/RS422	Half-duplex transceiver 1/8-unit-load receiver input impedance or up to 256 transceivers on one bus True fail-safe receiver No integral 120Ohm termination resistor DB9, DB15, or DB25 connector, male or female Baud rate: 300bps to 115200bps Parity: Even, Odd, None, Mark, Space Data length: 5-bit, 6-bit, 7-bit, 8-bit Stop bits: 1-bit, 2-bit
Power	USB bus powered, receiving 14mA, transmitting 17mA (Point-to-Point)
Software	32-bit and 64-bit virtual COM port device driver for Microsoft Windows 8, Windows 7, Windows Vista, Windows XP.

Assembling and RS485/RS422 Signals

The D-sub connector can be assembled by us if pin assignments are provided. An integral 120 Ohm termination resistor can be installed if requested. RS485/RS422 signals are,

Conductor Color	RS485/RS422 Signal
Green	TxD+/RxD+ (A)
Orange	TxD-/RxD- (B)
Brown	GND (C)

Ordering Information

Part Number	Connector Type	Backshell Material
A00485D9FP	DB9 female	Plastic
A00485D9FM	DB9 female	Metal
A00485D9MP	DB9 male	Plastic
A00485D9MM	DB9 male	Metal
A00485D15FP	DB15 female	Plastic
A00485D15FM	DB15 female	Metal
A00485D15MP	DB15 male	Plastic
A00485D15MM	DB15 male	Metal

DEVICE FUNCTIONS

A00485D25FP	DB25 female	Plastic
A00485D25FM	DB25 female	Metal
A00485D25MP	DB25 male	Plastic
A00485D25MM	DB25 male	Metal

System Requirements

Configuring RS485/RS422 serial settings on a PC requires:

- Microsoft Windows 8, Windows 7, Windows Vista, or Windows XP
- eeTerminal (download from www.devicefunctions.com)

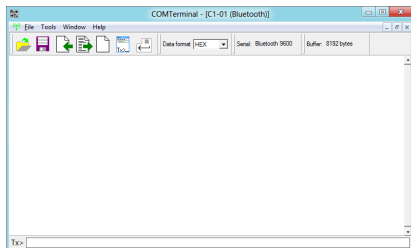
Device Driver Installation:

The software package is supplied in a compressed folder file named *USB_COM_1P_Driver* or a CD. Here are the installation steps.

1. If you have file *USB_COM_1P_Driver*, rename *USB_COM_1P_Driver* to *USB_COM_1P_Driver.zip*, extract all files to a file folder on your local disk or USB drive, double click *setup.exe* to start software installation.
2. If you have the software CD, insert the software CD into your computer's disc drive, the software installation will start automatically.
3. Follow the on-screen instructions until the setup wizard finishes.
4. Plug the adapter's USB cable to the computer's USB port.
5. Follow the on-screen instructions if any to complete the software installation.

Accessories

eeTerminal: Configure, read, and write USB-RS485/RS422 cables. Upload/download files.



©2014 Device Functions. All right reserved.