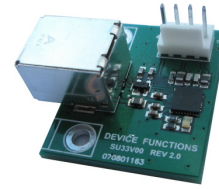


DEVICE FUNCTIONS

C3006C

Features

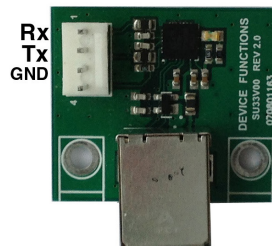
- UART - USB conversion.
- Virtual COM port device driver.
- ESD surge protection on USB port: $\pm 8\text{kv}$ contact discharge, $\pm 15\text{kv}$ air gap discharge.
- LC filters on UART Rx and Tx lines.
- USB bus powered, 12mA
- Fixed and programmable UART settings



Specifications

USB	USB specification 2.0 compliant	
	USB type B receptacle connector	
	USB full speed 12Mbps transmission	
UART	Signals: Rx, Tx, GND	
	Receive Rx input voltage range: 3.3v to 5v	
	Transmit Tx output voltage: 3.3v	
	Connector: 2.54mm pitch, single row 4-pin connector	
	Baud rate: 1200bps to 115200bps	
	Parity: Even, Odd, None, Mark, Space	
	Data length: 5-bit, 6-bit, 7-bit, 8-bit	
	Stop bits: 1-bit, 2-bit	
Grounding	USB connector is grounded.	
Power	USB bus powered, 12mA	
Software	32-bit and 64-bit virtual COM port device driver for Microsoft Windows 8, Windows 7, Windows Vista, Windows XP.	
Mounting	Chassis mount	
Part	C3006C	UART programmable, support all settings.
Number	C3006C-96	UART setting: 9600bps, 8-bit, No parity, 1-bit stop.
	C3006C-19	UART setting: 19200bps, 8-bit, No parity, 1-bit stop.
	C3006C-11	UART setting: 115200bps, 8-bit, No parity, 1-bit stop.
	Operating temperature range: -40 °C TO +85 °C	

UART Connector Definition



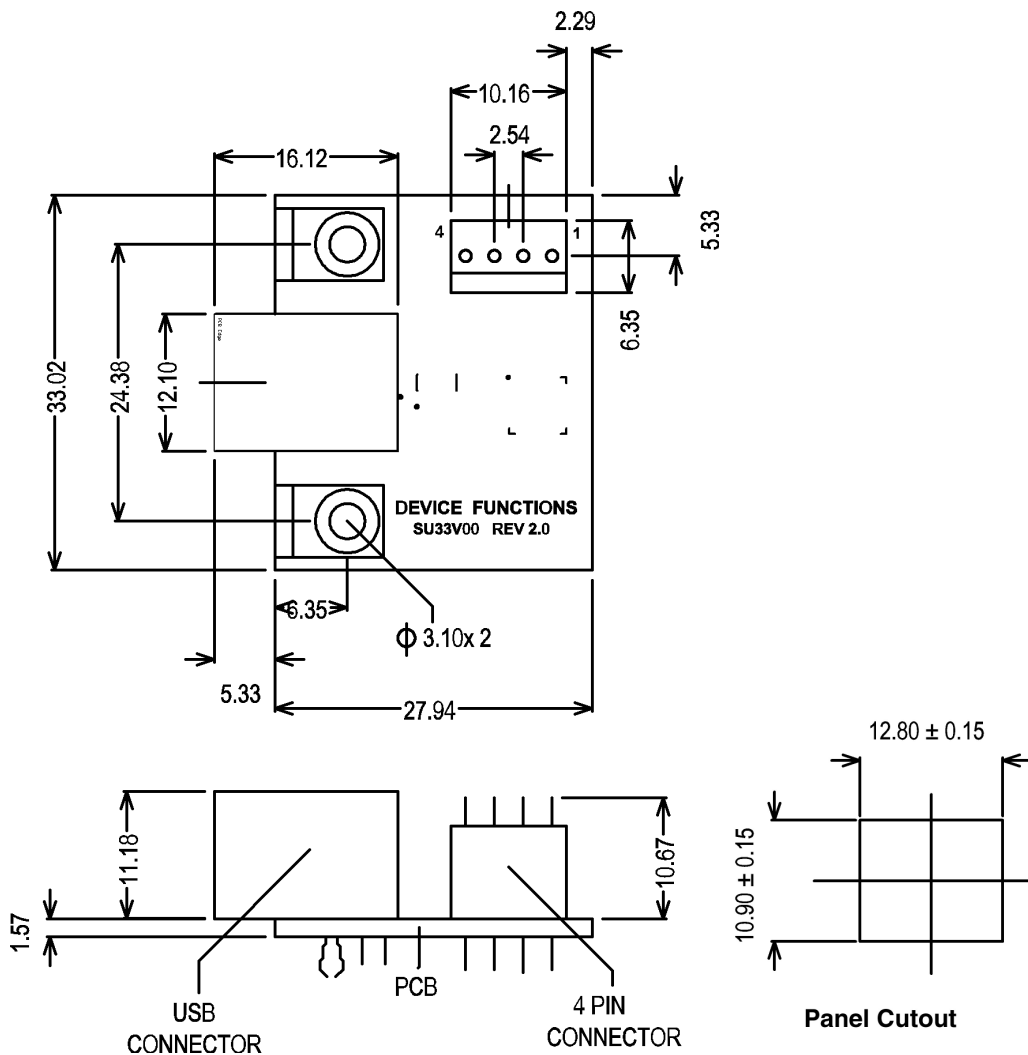
Software Installation

The software package is supplied in a compressed folder file named *USB_COM_1P_Driver* or a CD. Here are the installation steps.

DEVICE FUNCTIONS

1. If you have file *USB_COM_1P_Driver*, rename *USB_COM_1P_Driver* to *USB_COM_1P_Driver.zip*, extract all files to a file folder on your local disk or USB drive, double click *setup.exe* to start software installation.
2. If you have the software CD, insert the software CD into your computer's disc drive, the software installation will start automatically.
3. Follow the on-screen instructions until the setup wizard finishes.
4. Connect USB module to the computer's USB port with an USB cable.
5. Follow the on-screen instructions if any to complete the software installation.

Drawings (mm, tolerance ± 0.3 unless otherwise specified)



DEVICE FUNCTIONS

Accessories

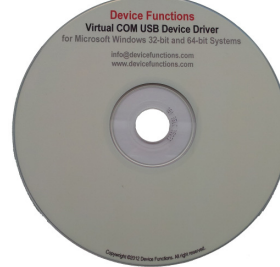
CL310

3 conductor 25cm to 50cm cable with 4 pin connector. The cable length is 25cm unless otherwise specified.



SWD001

Virtual COM port USB device driver CD
The virtual COM port device driver supports 32-bit (x86) and 64-bit (x64) Microsoft Windows 8, Windows 7, Windows Vista, Windows XP.



©2014 Device Functions. All right reserved.