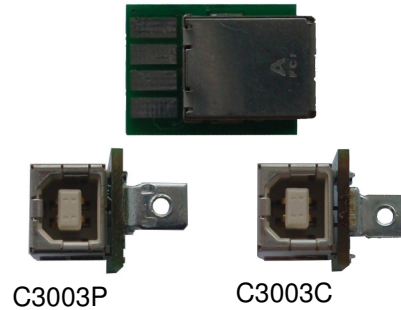


DEVICE FUNCTIONS

C3003C and C3003P

Features

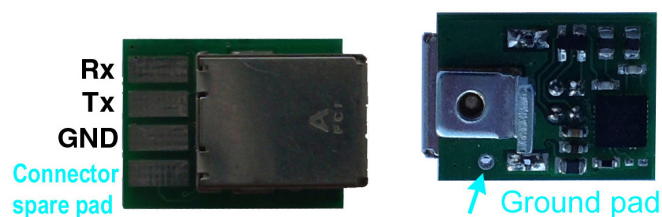
- UART - USB conversion.
- Virtual COM port device driver.
- ESD surge protection on USB port: $\pm 8\text{kv}$ contact discharge, $\pm 15\text{kv}$ air gap discharge.
- LC filters on UART Rx and Tx lines.
- USB bus powered, 13.6mA.
- Mounting bracket installed.
- Fixed and programmable UART settings.



Specifications

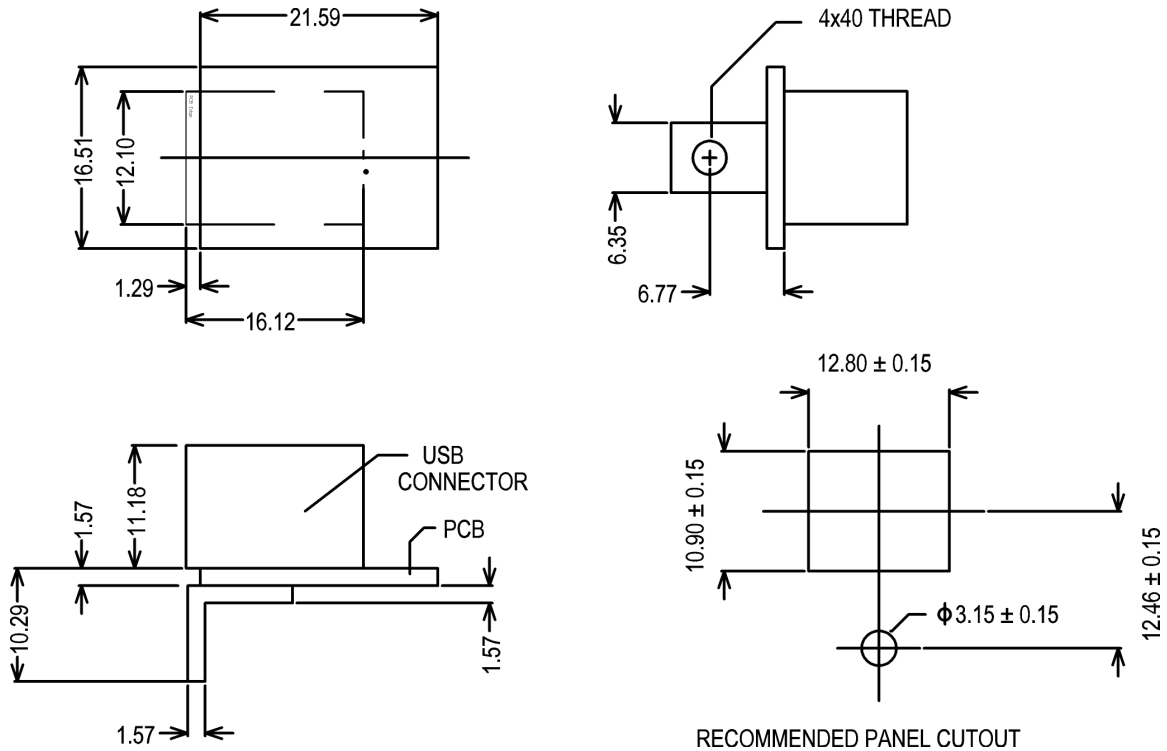
USB	USB specification 2.0 compliant USB type B receptacle connector USB full speed 12Mbps transmission
UART	Signals: Rx, Tx, GND Receive Rx input voltage range: 3.3v to 5v Transmit Tx output voltage: 3.3v Connector: 3 solder pads 5.84mmx2.54mm Baud rate: 1200bps to 115200bps Parity: Even, Odd, None, Mark, Space Data length: 5-bit, 6-bit, 7-bit, 8-bit Stop bits: 1-bit, 2-bit
Grounding	USB connector is floating. Grounding pads are provided.
Power	USB bus powered, 13.6mA
Software	32-bit and 64-bit virtual COM port device driver for Microsoft Windows 8, Windows 7, Windows Vista, Windows XP.
Mounting	C3003C chassis mount. 4x40 thread. C3003P panel mount. 4x40 thread.
Part Number	C3003C, C3003P UART programmable, support all settings. C3003C-96, C3003P-96 UART setting: 9600bps, 8-bit, No parity, 1-bit stop. C3003C-19, C3003C-19 UART setting: 19200bps, 8-bit, No parity, 1-bit stop. C3003C-11, C3003C-11 UART setting: 115200bps, 8-bit, No parity, 1-bit stop.
Operating temperature range: -40 °C TO +85 °C	

UART Connector Definition

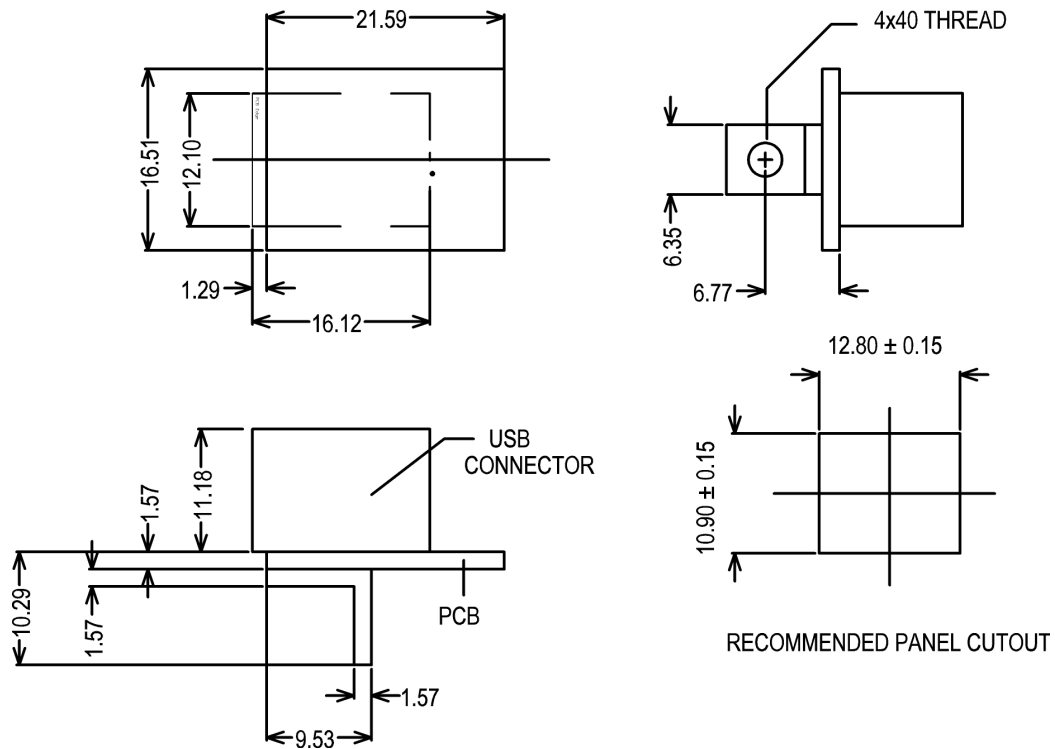


DEVICE FUNCTIONS

C3003P Drawings (mm, tolerance ± 0.3 unless otherwise specified)



C3003C Drawings (mm, tolerance ± 0.3 unless otherwise specified)



DEVICE FUNCTIONS

Software Installation

The software package is supplied in a compressed folder file named *USB_COM_1P_Driver* or a CD. Here are the installation steps.

1. If you have file *USB_COM_1P_Driver*, rename *USB_COM_1P_Driver* to *USB_COM_1P_Driver.zip*, extract all files to a file folder on your local disk or USB drive, double click *setup.exe* to start software installation.
2. If you have the software CD, insert the software CD into your computer's disc drive, the software installation will start automatically.
3. Follow the on-screen instructions until the setup wizard finishes.
4. Connect USB module to the computer's USB port with an USB cable.
5. Follow the on-screen instructions if any to complete the software installation.

Accessory

SWD001

Virtual COM USB device driver CD

The virtual COM port device driver supports 32-bit (x86) and 64-bit (x64) Microsoft Windows 8, Windows 7, Windows Vista, Windows XP.



©2014 Device Functions. All right reserved.